
A $C^1 - C^0$ conforming virtual element discretization for the transmission eigenvalue problem

David Mora · Iván Velásquez

Abstract In this study, we present and analyze a virtual element discretization for a non-selfadjoint fourth order eigenvalue problem derived from the transmission eigenvalue problem. Using suitable projection operators, the sesquilinear forms are discretized by only using the proposed degrees of freedom associated with the virtual spaces. Under standard assumptions on the polygonal meshes, we show that the resulting scheme provides a correct approximation of the spectrum and prove an optimal order error estimate for the eigenfunctions and a double order for the eigenvalues. Finally, we present some numerical experiments illustrating the behavior of the virtual scheme on different families of meshes.

Keywords transmission eigenvalues · spectral problem · virtual element method · polygonal meshes · error estimates

Mathematics Subject Classification (2000) 35P30 · 65N15 · 65N25 · 65N30 · 78A46

1 Introduction

This paper deals with the numerical approximation by the Virtual Element Method (VEM) [5] of the transmission eigenvalue problem. This problem has important applications in inverse scattering. For instance, it can be used to obtain estimates for the material properties of the scattering object and have a theoretical importance for the analysis of reconstruction in inverse scattering theory. For these reasons, this problem has attracted much interest in the last years.

From the mathematical point of view, the transmission eigenvalue problem is nonstandard and difficult to treat. As a consequence, different variational formulations have been proposed and analyzed to solve the eigenvalue problem. More precisely, the problem can be formulated as a fourth order quadratic eigenvalue problem, as a mixed eigenvalue problem, among others. Several conforming and nonconforming finite element methods, mixed formulations have been proposed during the last years. We cite as a minimal sample of them [14–16, 20, 23, 26, 32, 41, 44, 47].

D. Mora
GIMNAP, Departamento de Matemática, Universidad del Bío-Bío, Concepción, Chile and CI²MA, Universidad de Concepción, Concepción, Chile.
E-mail: dmora@ubiobio.cl

I. Velásquez
Departamento de Ciencias Básicas, Universidad del Sinú-Elías Bechara Zainúm, Montería, Colombia.
E-mail: ivanvelasquez@unisinu.edu.co

Among the existing techniques, in [15] it has been introduced and analyzed a variational formulation in $H^2(\Omega) \times H^1(\Omega)$. The resulting variational problem is obtained by considering an additional second order elliptic problem to write a double-size linear eigenvalue problem. By using Argyris and Lagrange finite element spaces, a conforming discretization is proposed. A complete analysis of the method including error estimates is proved using the theory for compact nonselfadjoint operators. Following a similar approach, in [46] it has been written a weak formulation in $H^2(\Omega) \times L^2(\Omega)$ for the transmission eigenvalue problem which is based on a linearization technique by considering an additional unknown in L^2 . The authors have proposed a conforming $C^1 - C^1$ finite element discretization in 2D and 3D and error estimates have been obtained. We recall that fourth order problems require the use of globally C^1 polynomial spaces. The construction of C^1 -conforming finite elements is difficult in general, since they usually involve a large number of degrees of freedom [21]; thus, they are often viewed as prohibitively expensive due to their high polynomial degree.

The VEM is a recent technology introduced in [5] as a generalization of finite element method which among its advantages permits to easily implement highly regular conforming discrete spaces. This makes the method very feasible to solve fourth order problems [2, 3, 7, 9, 13, 35]. The method has been also used to solve eigenvalue problems, among which we mention the following recent works [18, 19, 8, 11, 24, 25, 29–31, 34, 33, 35, 37].

Regarding the approximation by VEM of the transmission eigenvalue problem, in [36] it has been presented a $C^1 - C^0$ -conforming virtual element method to solve the spectral problem on general polygonal meshes. This scheme is based on the formulation presented in [15]. Optimal order error estimates for the eigenfunctions and a double order for the eigenvalues are derived. More recently, in [38] it has been introduced and analyzed a conforming $C^1 - C^1$ VEM on polytopal meshes by considering the variational formulation introduced in [46]. Optimal order error estimates for the eigenfunctions and a double order for the eigenvalues are derived. The aim of this work is to consider the same continuous formulation as in [46, 38] and use a different discretization for the additional unknown introduced to transform the problem into an equivalent double-size linear eigenvalue. We remark that by considering this new discretization, we obtain a smaller generalized eigenvalue problem.

In the present paper, we consider a $C^1 - C^0$ -conforming virtual element method to solve the transmission eigenvalue problem. The variational formulation leads to a fourth order quadratic eigenvalue problem, which is transformed into an equivalent double-size linear eigenvalue problem that fits within the functional framework for nonselfadjoint compact bounded operators. At the continuous level, we follow [39] to obtain an appropriate spectral characterization. Next, we propose a $C^1 - C^0$ -conforming virtual element approximation that applies to general polygonal meshes. More precisely, the scheme is based on the discrete space introduced in [2] for the Cahn-Hilliard equations and in [1] for the linear reaction-diffusion equation. We construct proper L^2 -projection operators that are used to approximate the sesquilinear form presented in the system. At the discrete level, we use once again [39] to prove that the spectrum is correctly approximated and to obtain error estimates.

Outline. This paper is structured as follows: we introduce in Section 2 the interior transmission eigenvalue problem, first in terms of a system of second order equations and then in an equivalent form as a linear nonselfadjoint fourth order eigenvalue problem. In Section 3, we present the discrete spaces together with their properties. In Section 4, we construct the discrete sesquilinear forms by using the projection operators. Moreover, we introduce the virtual element discrete formulation. In Section 5, we present the error analysis of the virtual scheme. In Section 6, we report three numerical tests that allow us to assess the convergence properties of the virtual element scheme.

2 Model Problem

The transmission eigenvalue problem can be stated as follows (see, for instance, [22,42]). Find $k \in \mathbb{C}$ and $\psi, \phi \in L^2(\Omega)$ with $\psi - \phi \in H^2(\Omega)$ such that

$$\Delta\psi + k^2 n\psi = 0 \quad \text{in } \Omega, \quad (2.1a)$$

$$\Delta\phi + k^2\phi = 0 \quad \text{in } \Omega, \quad (2.1b)$$

$$\psi - \phi = 0 \quad \text{on } \Gamma, \quad (2.1c)$$

$$\partial_\nu\psi - \partial_\nu\phi = 0 \quad \text{on } \Gamma. \quad (2.1d)$$

The system (2.1a)–(2.1d) corresponds to the scattering problem for an isotropic inhomogeneous medium for the Helmholtz equation, where $\Omega \subseteq \mathbb{R}^2$ is a bounded simply-connected Lipschitz domain with boundary $\Gamma := \partial\Omega$. Here, ν denotes the outward unit normal vector to Γ , ∂_ν denotes the normal derivative and n is the index of refraction. We assume that $n(\mathbf{x}) =: n \in W^{2,\infty}(\Omega)$ satisfying either one of the following assumptions for all $\mathbf{x} \in \Omega$:

$$\begin{aligned} 1 < n_* \leq n(\mathbf{x}) \leq n^* < \infty, \\ 0 < n_* \leq n(\mathbf{x}) \leq n^* < 1. \end{aligned} \quad (2.2)$$

The transmission eigenvalue problem is often solved by reformulating it as a fourth-order eigenvalue problem. More precisely, by introducing a new unknown $u := (\psi - \phi) \in H_0^2(\Omega)$, the model problem (2.1a)–(2.1d) can be rewritten as follows:

$$(\Delta + k^2 n) \frac{1}{n-1} (\Delta + k^2) u = 0 \quad \text{in } \Omega. \quad (2.3)$$

In this section we introduce a continuous variational formulation associated with the fourth order transmission eigenvalue problem (cf. (2.3)) and its spectral characterization. With this aim, we multiply the identity (2.3) by $w \in H_0^2(\Omega)$ and we arrive at the following quadratic eigenvalue problem: find $k \in \mathbb{C}$ and $u \in H_0^2(\Omega)$, $u \neq 0$ such that

$$\int_\Omega \frac{1}{n-1} \Delta u \Delta \bar{w} + k^2 \int_\Omega \Delta u \left(\frac{n}{n-1} \bar{w} \right) + k^2 \int_\Omega \frac{1}{n-1} u \Delta \bar{w} + k^4 \int_\Omega \frac{n}{n-1} u \bar{w} = 0 \quad \forall w \in H_0^2(\Omega). \quad (2.4)$$

One of the main difficulties of the variational formulation (2.4) is the nonlinearity with respect to the parameter k^2 . For the theoretical analysis it is convenient to transform the above variational problem into a double-size linear eigenvalue problem. There are different options to do that. In this work we will follow the approach used in [46,45,38]. More precisely, we consider an auxiliary variable denoted by z and defined as:

$$z := k^2 u \quad \text{in } \Omega. \quad (2.5)$$

Now, we denote by \mathbf{H} the product space $\mathbf{H} := H_0^2(\Omega) \times L^2(\Omega)$, endowed with the following product norm

$$\|(w, v)\|_{\mathbf{H}} := (\|D^2 w\|_{0,\Omega}^2 + \|v\|_{0,\Omega}^2)^{1/2},$$

where $D^2 w$ denotes the Hessian matrix of w . Moreover, it is clear that the above norm is equivalent with the usual norm in $H_0^2(\Omega) \times L^2(\Omega)$.

Using (2.5) we arrive at the following weak formulation of the transmission eigenvalue problem:

Problem 1 Find $(\lambda, (u, z)) \in \mathbb{C} \times \mathbf{H}$ with $(u, z) \neq \mathbf{0}$ such that

$$\int_\Omega \frac{1}{n-1} \Delta u \Delta \bar{w} + \int_\Omega z \bar{v} = \lambda \left(\int_\Omega \Delta u \left(\frac{n}{n-1} \bar{w} \right) + \int_\Omega \frac{1}{n-1} u \Delta \bar{w} + \int_\Omega \frac{n}{n-1} z \bar{w} - \int_\Omega u \bar{v} \right),$$

for all $(w, v) \in \mathbf{H}$ and with $\lambda := -k^2$.

In order to write the problem in a compact form, we introduce the following forms:

$$\mathcal{A} : \mathbf{H} \times \mathbf{H} \rightarrow \mathbb{C}, \quad \mathcal{A}((u, z), (w, v)) := \int_{\Omega} \frac{1}{n-1} \Delta u \Delta \bar{w} + \int_{\Omega} z \bar{v}, \quad (2.6)$$

$$\mathcal{B} : \mathbf{H} \times \mathbf{H} \rightarrow \mathbb{C}, \quad \mathcal{B}((u, z), (w, v)) := \int_{\Omega} \Delta u \left(\frac{n}{n-1} \bar{w} \right) + \int_{\Omega} \frac{1}{n-1} u \Delta \bar{w} + \int_{\Omega} \frac{n}{n-1} z \bar{w} - \int_{\Omega} u \bar{v}. \quad (2.7)$$

Thus, the nonselfadjoint eigenvalue problem can be written as follows:

Problem 2 Find $(\lambda, (u, z)) \in \mathbb{C} \times \mathbf{H}$ with $(u, z) \neq \mathbf{0}$ such that

$$\mathcal{A}((u, z), (w, v)) = \lambda \mathcal{B}((u, z), (w, v)) \quad \forall (w, v) \in \mathbf{H}.$$

The following lemma establishes some properties for the forms $\mathcal{A}(\cdot, \cdot)$ and $\mathcal{B}(\cdot, \cdot)$, which will play an important role in the analysis of the solution operator.

Lemma 1 *There exist positive constants α_0 and C that depend on the index of refraction n such that*

$$\mathcal{A}((w, v), (w, v)) \geq \alpha_0 \|(w, v)\|_{\mathbf{H}}^2, \quad (2.8)$$

$$|\mathcal{A}((u, z), (w, v))| \leq C \|(u, z)\|_{\mathbf{H}} \|(w, v)\|_{\mathbf{H}}, \quad (2.9)$$

$$|\mathcal{B}((u, z), (w, v))| \leq C \|(u, z)\|_{\mathbf{H}} \|(w, v)\|_{\mathbf{H}}, \quad (2.10)$$

for all $(u, z), (w, v) \in \mathbf{H}$.

According to Lemma 1, we are in a position to introduce the solution operator.

$$\begin{aligned} \mathbf{T} : \mathbf{H} &\longrightarrow \mathbf{H} \\ (f, g) &\longmapsto \mathbf{T}(f, g) = (\hat{u}, \hat{z}) \end{aligned}$$

defined as the unique solution of the following source problem (see Lemma 1):

$$\mathcal{A}((\hat{u}, \hat{z}), (w, v)) = \mathcal{B}((f, g), (w, v)) \quad \forall (w, v) \in \mathbf{H}. \quad (2.11)$$

Thus, we have that the linear operator \mathbf{T} is well defined and bounded. Moreover, we have that $(\lambda, (u, z))$ solves Problem 1 if and only if $(\mu, (u, z))$ is an eigenpair of \mathbf{T} , i.e. $\mathbf{T}(u, z) = \mu(u, z)$, with $\mu := 1/\lambda$.

We observe that no spurious eigenvalues are introduced into the problem. In fact, if $\mu \neq 0$, then $(0, z)$ is not an eigenfunction of the problem.

The following is an additional regularity result associated with the solution of the source problem (2.11). The proof follows from the classical regularity result for the biharmonic problem (see for instance [10, 27, 40]).

Lemma 2 *There exist $s \in (0, 1]$ and a positive constant C depending on the index of refraction n such that for all $(f, g) \in \mathbf{H}$, the unique solution (\hat{u}, \hat{z}) of problem (2.11) satisfies $(\hat{u}, \hat{z}) \in \mathbf{H}^{2+s}(\Omega) \times \mathbf{H}_0^2(\Omega)$ and*

$$\|\hat{u}\|_{2+s, \Omega} + \|\hat{z}\|_{2, \Omega} \leq C \|(f, g)\|_{\mathbf{H}}.$$

Proof On the one hand, by testing problem (2.11) with $(w, 0) \in \mathbf{H}$, we obtain a biharmonic problem with its right-hand side in $H^{-1}(\Omega)$. Thus, the estimate for \hat{u} follows. On the other hand, by testing problem (2.11) with $(0, v) \in \mathbf{H}$, we obtain that $\hat{z} = f \in \mathbf{H}_0^2(\Omega)$ and we conclude the proof.

Now, as a consequence of Lemma 2 and the compact inclusion $\mathbf{H}^{2+s}(\Omega) \times \mathbf{H}_0^2(\Omega) \hookrightarrow \mathbf{H}$, we obtain that operator \mathbf{T} is compact. In addition, we have the following spectral characterization result.

Lemma 3 *The spectrum of \mathbf{T} satisfies $\text{sp}(\mathbf{T}) = \{0\} \cup \{\mu_k\}_{k \in \mathbb{N}}$, where $\{\mu_k\}_{k \in \mathbb{N}}$ is a sequence of complex eigenvalues which converges to 0 and their corresponding eigenspaces lie in $\mathbf{H}^{2+s}(\Omega) \times \mathbf{H}^{2+s}(\Omega)$ and*

$$\|u\|_{2+s, \Omega} + \|z\|_{2+s, \Omega} \leq C \|(u, z)\|_{\mathbf{H}}.$$

In addition, $\mu = 0$ is not an eigenvalue of \mathbf{T} .

3 Virtual Element Discretization

In this section, we will introduce the virtual element spaces (local and global) to be used in the discretization of Problem 2.

We begin with the mesh construction and the assumptions considered to introduce the discrete virtual element spaces (see e.g [1, 5]). Let $\{\mathcal{T}_h\}_{h>0}$ be a sequence of decompositions of Ω into general polygonal elements E . We will denote by h_E the diameter of the element E and by h the maximum of the diameters of all the elements of the mesh, i.e., $h := \max_{E \in \mathcal{T}_h} h_E$. In addition, we denote by N_E and N_v^E the number of polygons in \mathcal{T}_h and the number of vertices of E , respectively. Moreover, we denote by e a generic edge of \mathcal{T}_h and for all $e \in \partial E$, we define a unit normal vector ν_E^e that points outside of E .

As in [5], we need to assume regularity of the polygonal meshes in the following sense: there exists a positive real number γ such that, for every h and every $E \in \mathcal{T}_h$,

- A₁**: $E \in \mathcal{T}_h$ is star-shaped with respect to every point of a ball of radius γh_E ;
- A₂**: the ratio between the shortest edge and the diameter h_E of E is larger than γ .

Now, for all $m \in \mathbb{N}$, we will denote by $\mathbb{P}_m(\mathcal{O})$ the space of polynomials of degree up to m defined on the subset $\mathcal{O} \subseteq \mathbb{R}^2$.

We introduce on each element $E \in \mathcal{T}_h$ the following finite dimensional spaces:

$$\begin{aligned} \widetilde{W}_h(E) := \{w_h \in \mathbf{H}^2(E) : \Delta^2 w_h \in \mathbb{P}_2(E), w_h|_{\partial E} \in C^0(\partial E), w_h|_e \in \mathbb{P}_3(e) \ \forall e \in \partial E, \\ \nabla w_h|_{\partial E} \in [C^0(\partial E)]^2, \partial_{\nu_E^e} w_h|_e \in \mathbb{P}_1(e) \ \forall e \in \partial E\}, \end{aligned}$$

and

$$\widetilde{V}_h(E) := \{v_h \in \mathbf{H}^1(E) : \Delta v_h \in \mathbb{P}_1(E), v_h|_{\partial E} \in C^0(\partial E), v_h|_e \in \mathbb{P}_1(e) \ \forall e \in \partial E\}.$$

Moreover, in $\widetilde{W}_h(E)$ and $\widetilde{V}_h(E)$ we define the following sets of linear operators. For all $w_h \in \widetilde{W}_h(E)$ and $v_h \in \widetilde{V}_h(E)$ we consider

- D_{W1}**: evaluation of w_h at the N_v^E vertices of E ;
- D_{W2}**: evaluation of ∇w_h at the N_v^E vertices of E ;
- D_V**: evaluation of v_h at the N_v^E vertices of E .

Projection operators and local virtual spaces. In order to introduce the local virtual space, we define the projector $\Pi_E^\Delta : \widetilde{W}_h(E) \rightarrow \mathbb{P}_2(E)$ as follows:

$$\begin{cases} \int_E D^2 \Pi_E^\Delta w_h : D^2 q = \int_E D^2 w_h : D^2 q & \forall q \in \mathbb{P}_2(E), \\ ((\Pi_E^\Delta w_h, q))_E = ((w_h, q))_E & \forall q \in \mathbb{P}_1(E), \end{cases} \quad (3.1)$$

where $((\varphi_h, \phi_h))_E$ is defined as follows:

$$((\varphi_h, \phi_h))_E := \sum_{i=1}^{N_v^E} \varphi_h(\mathbf{v}_i) \phi_h(\mathbf{v}_i) \quad \forall \varphi_h, \phi_h \in C^0(\partial E),$$

with \mathbf{v}_i , $1 \leq i \leq N_v^E$, being the vertices of E .

Remark 1 The second equation in (3.1) is to select an element from the non-trivial kernel of the operator Π_E^Δ . We mention that it could be substituted by any other appropriate compatible average on ∂E , for instance,

$$(\Pi_E^\Delta w_h, q)_{\partial E} = (w_h, q)_{\partial E} \quad \forall q \in \mathbb{P}_1(E),$$

where $(\cdot, \cdot)_{\partial E}$ is the standard L^2 inner product over the boundary of E .

We refer to [2] to prove that operator Π_E^Δ is computable from the output values of the sets $\mathbf{D}_{\mathbf{W}_1}$ and $\mathbf{D}_{\mathbf{W}_2}$.

In a similar way, we define the projector $\Pi_E^\nabla : \widetilde{V}_h(E) \rightarrow \mathbb{P}_1(E)$ for each $\psi \in \widetilde{V}_h(E)$ as the solution of

$$\begin{cases} \int_E \nabla \Pi_E^\nabla v_h \cdot \nabla q = \int_E \nabla v_h \cdot \nabla q & \forall q \in \mathbb{P}_1(E), \\ (\Pi_E^\nabla v_h, q)_{\partial E} = (v_h, q)_{\partial E} & \forall q \in \mathbb{P}_0(E). \end{cases}$$

We observe that operator Π_E^∇ can be computed using only the output values of the set $\mathbf{D}_{\mathbf{V}}$ (see [1]).

We introduce on each element $E \in \mathcal{T}_h$ the following local virtual space $W_h(E)$ (see, for instance, [2]).

$$W_h(E) := \left\{ w_h \in \widetilde{W}_h(E) : \int_E (\Pi_E^\Delta w_h) q = \int_E w_h q \quad \forall q \in \mathbb{P}_2(E) \right\}.$$

Now, since $W_h(E) \subseteq \widetilde{W}_h(E)$ the projector Π_E^Δ is well defined and computable in $W_h(E)$. Moreover, the sets of linear operators $\mathbf{D}_{\mathbf{W}_1}$ and $\mathbf{D}_{\mathbf{W}_2}$ constitutes a set of degrees of freedom for $W_h(E)$, we refer to [2, Lemma 2.3] for further details.

Now, we introduce the following local virtual space (see [1]):

$$V_h(E) := \left\{ v_h \in \widetilde{V}_h(E) : \int_E (\Pi_E^\nabla v_h) q = \int_E v_h q \quad \forall q \in \mathbb{P}_1(E) \right\}.$$

It is clear that $V_h(E) \subseteq \widetilde{V}_h(E)$. Thus, the linear operator Π_E^∇ is well defined on $V_h(E)$. Moreover, the set of operators $\mathbf{D}_{\mathbf{V}}$ constitutes a set of degrees of freedom for the space $V_h(E)$ (see [1]).

We also have that $\mathbb{P}_2(E) \times \mathbb{P}_1(E) \subseteq W_h(E) \times V_h(E)$. This will guarantee the good approximation properties for the spaces.

Now, for all $m \in \mathbb{N} \cup \{0\}$ and $E \in \mathcal{T}_h$, we define the following projector:

$$\Pi_E^m : L^2(E) \rightarrow \mathbb{P}_m(E); \quad \int_E (r - \Pi_E^m r) q = 0 \quad \forall q \in \mathbb{P}_m(E). \quad (3.2)$$

It easy to check that for all $w_h \in W_h(E)$ the scalar functions $\Pi_E^2 w_h$ and $\Pi_E^0 \Delta w_h$ are computable from the degrees of freedom $\mathbf{D}_{\mathbf{W}_1}$ and $\mathbf{D}_{\mathbf{W}_2}$ (see [2]). Moreover, for all $v_h \in V_h(E)$ the scalar function $\Pi_E^1 v_h$ is computable from the degrees of freedom $\mathbf{D}_{\mathbf{V}}$ (see [1]).

Global virtual spaces. Now, we introduce the global virtual spaces to be used in the discretization of Problem 2.

For every decomposition \mathcal{T}_h of Ω into simple polygons E , the first global virtual element space is defined as

$$W_h := \{w_h \in H_0^2(\Omega) : w_h|_E \in W_h(E)\}.$$

A set of degrees of freedom for W_h is given by all pointwise values of w_h on all vertices of \mathcal{T}_h together with all pointwise values of ∇w_h on all vertices of \mathcal{T}_h , excluding the vertices on the boundary (where the values vanish).

Next, we introduce the following global virtual space.

$$V_h := \{v_h \in H_0^1(\Omega) : v_h|_E \in V_h(E)\}.$$

In this case, a set of degrees of freedom for V_h is given by all pointwise values v_h on all vertices of \mathcal{T}_h excluding the vertices on the boundary (where the values vanish).

Finally, for every decomposition \mathcal{T}_h of Ω into simple polygons E , we introduce the global virtual space denoted by \mathbf{H}_h as follow:

$$\mathbf{H}_h := W_h \times V_h.$$

Remark 2 We observe that the virtual element space V_h is a conforming space in $H^1(\Omega)$. This space will be used for the approximation of the auxiliary variable $z \in L^2(\Omega)$. This choice permit us to incorporate a Dirichlet boundary condition for z and also facilitate the analysis of the proposed virtual method. Other virtual element discretizations based on piecewise discontinuous polynomials will be studied in a future work.

4 Discrete Spectral Problem

In this section, we will introduce a virtual element scheme to approximate the spectrum of the transmission eigenvalue problem stated in Problem 2 and using the virtual spaces introduced in Section 3

In what follows, for simplicity, we assume that the index of refraction n is piecewise constant with respect to the decomposition \mathcal{T}_h , i.e., n is constant on each polygon $E \in \mathcal{T}_h$.

Next, we decompose the continuous sesquilinear forms (2.6)-(2.7) in an element by element contribution as follows:

$$\begin{aligned} \mathcal{A}((u, z), (w, v)) &:= \mathcal{A}^1(u, w) + \mathcal{A}^2(z, v), \\ &= \sum_{E \in \Omega_h} [\mathcal{A}_E^1(u, w) + \mathcal{A}_E^2(z, v)], \end{aligned}$$

with

$$\mathcal{A}_E^1(u, w) := \int_E \frac{1}{n-1} \Delta u \Delta \bar{w}, \quad \text{and} \quad \mathcal{A}_E^2(z, v) := \int_E z \bar{v}.$$

Moreover, we introduce

$$\mathcal{B}_E((u, z), (w, v)) := \int_E \Delta u \left(\frac{n}{n-1} \bar{w} \right) + \int_E \frac{1}{n-1} u \Delta \bar{w} + \int_E \frac{n}{n-1} z \bar{v} - \int_E u \bar{v}.$$

Now, in order to propose the discrete scheme, we need to introduce some definitions. First, we consider $\mathcal{S}_E^\Delta(\cdot, \cdot)$ and $\mathcal{S}_E^0(\cdot, \cdot)$ any hermitian positive definite forms satisfying:

$$\alpha_* \mathcal{A}_E^1(w_h, w_h) \leq \mathcal{S}_E^\Delta(w_h, w_h) \leq \alpha^* \mathcal{A}_E^1(w_h, w_h) \quad \forall w_h \in W_h(E) \quad \Pi_E^\Delta w_h = 0, \quad (4.1)$$

$$\beta_* \mathcal{A}_E^2(v_h, v_h) \leq \mathcal{S}_E^0(v_h, v_h) \leq \beta^* \mathcal{A}_E^2(v_h, v_h) \quad \forall v_h \in V_h(E), \quad (4.2)$$

where α_*, β_* and α^*, β^* are positive constants depending only on the constant γ from mesh assumptions **A**₁-**A**₂.

Next, we define the discrete versions of the sesquilinear forms presented in (2.6)-(2.7) as follows:

$$\begin{aligned} \mathcal{A}^{1h} : W_h \times W_h &\rightarrow \mathbb{C}; & \mathcal{A}^{1h}(u_h, w_h) &:= \sum_{E \in \mathcal{T}_h} \mathcal{A}_E^{1h}(u_h, w_h), \\ \mathcal{A}^{2h} : V_h \times V_h &\rightarrow \mathbb{C}; & \mathcal{A}^{2h}(z_h, v_h) &:= \sum_{E \in \mathcal{T}_h} \mathcal{A}_E^{2h}(z_h, v_h), \\ \mathcal{B}^h : \mathbf{H}_h \times \mathbf{H}_h &\rightarrow \mathbb{C}; & \mathcal{B}^h((u_h, z_h), (w_h, v_h)) &:= \sum_{E \in \mathcal{T}_h} \mathcal{B}_E^h((u_h, z_h), (w_h, v_h)), \end{aligned}$$

where

$$\mathcal{A}_E^{1h} : W_h(E) \times W_h(E) \rightarrow \mathbb{C}, \quad \mathcal{A}_E^{2h} : V_h(E) \times V_h(E) \rightarrow \mathbb{C}, \quad \mathcal{B}_E^h : \mathbf{H}_h^E \times \mathbf{H}_h^E \rightarrow \mathbb{C},$$

are local sesquilinear forms given by

$$\mathcal{A}_E^{1h}(u_h, w_h) := \mathcal{A}_E^1(\Pi_E^\Delta u_h, \Pi_E^\Delta w_h) + \mathcal{S}_E^\Delta(u_h - \Pi_E^\Delta u_h, w_h - \Pi_E^\Delta w_h), \quad (4.3)$$

$$\mathcal{A}_E^{2h}(z_h, v_h) := \mathcal{A}_E^2(\Pi_E^1 z_h, \Pi_E^1 v_h) + \mathcal{S}_E^0(z_h - \Pi_E^1 z_h, v_h - \Pi_E^1 v_h), \quad (4.4)$$

$$\begin{aligned} \mathcal{B}_E^h((u_h, z_h), (w_h, v_h)) &:= \int_E \frac{n}{n-1} \Pi_E^0 \Delta u_h \Pi_E^2 \bar{w}_h + \int_E \frac{1}{n-1} \Pi_E^2 u_h \Pi_E^0 \Delta \bar{w}_h \\ &+ \int_E \frac{n}{n-1} \Pi_E^1 z_h \Pi_E^2 \bar{w}_h - \int_E \Pi_E^2 u_h \Pi_E^1 \bar{v}_h, \end{aligned} \quad (4.5)$$

with $\mathbf{H}_h^E := W_h(E) \times V_h(E)$.

The following lemma establishes properties of consistency and stability for the local sesquilinear forms $\mathcal{A}_E^{1h}(\cdot, \cdot)$ and $\mathcal{A}_E^{2h}(\cdot, \cdot)$. The proof follows standard arguments in the VEM literature (see [1]).

Proposition 1 *The local forms $\mathcal{A}_E^{1h}(\cdot, \cdot)$ and $\mathcal{A}_E^{2h}(\cdot, \cdot)$ satisfy the following properties:*

– *Consistency: for all $h > 0$ and for all $E \in \mathcal{T}_h$ we have that*

$$\mathcal{A}_E^{1h}(q, w_h) = \mathcal{A}_E^1(q, w_h) \quad \forall q \in \mathbb{P}_2(E) \quad \forall w_h \in W_h(E); \quad (4.6)$$

$$\mathcal{A}_E^{2h}(q, v_h) = \mathcal{A}_E^2(q, v_h) \quad \forall q \in \mathbb{P}_1(E) \quad \forall v_h \in V_h(E). \quad (4.7)$$

– *Stability and boundedness: There exist positive constants $\alpha_1, \alpha_2, \beta_1, \beta_2$ depending on the index of refraction n and the constant γ from mesh assumptions \mathbf{A}_1 – \mathbf{A}_2 such that:*

$$\alpha_1 \mathcal{A}_E^1(w_h, w_h) \leq \mathcal{A}_E^{1h}(w_h, w_h) \leq \alpha_2 \mathcal{A}_E^1(w_h, w_h) \quad \forall w_h \in W_h(E); \quad (4.8)$$

$$\beta_1 \mathcal{A}_E^2(v_h, v_h) \leq \mathcal{A}_E^{2h}(v_h, v_h) \leq \beta_2 \mathcal{A}_E^2(v_h, v_h) \quad \forall v_h \in V_h(E). \quad (4.9)$$

Now, for all $(u_h, z_h), (w_h, v_h) \in \mathbf{H}_h$, we introduce the discrete sesquilinear form

$$\mathcal{A}^h : \mathbf{H}_h \times \mathbf{H}_h \rightarrow \mathbb{C}; \quad \mathcal{A}^h((u_h, z_h), (w_h, v_h)) := \mathcal{A}^{1h}(u_h, w_h) + \mathcal{A}^{2h}(z_h, v_h). \quad (4.10)$$

As consequence of Proposition 1, we have the following result, which is the discrete version of Lemma 1.

Lemma 4 *There exist positive constants C and α that depend on the index of refraction n and the constants in (4.8)-(4.9) such that for all $(u_h, z_h), (w_h, v_h) \in \mathbf{H}_h$ we have*

$$\mathcal{A}^h((w_h, v_h), (w_h, v_h)) \geq \alpha \|(w_h, v_h)\|_{\mathbf{H}}^2, \quad (4.11)$$

$$|\mathcal{A}^h((u_h, z_h), (w_h, v_h))| \leq C \|(u_h, z_h)\|_{\mathbf{H}} \|(w_h, v_h)\|_{\mathbf{H}}, \quad (4.12)$$

$$|\mathcal{B}^h((u_h, z_h), (w_h, v_h))| \leq C \|(u_h, z_h)\|_{\mathbf{H}} \|(w_h, v_h)\|_{\mathbf{H}}. \quad (4.13)$$

Proof It is straightforward to prove the estimates (4.11)-(4.13) from Proposition 1 and the definition (4.5).

For the sesquilinear form $\mathcal{B}^h(\cdot, \cdot)$, we do not require any lower bound. Thus, we do not need to stabilize this form.

Now, we are in a position to write the virtual element discretization of Problem 2.

Problem 3 Find $(\lambda_h, (u_h, z_h)) \in \mathbb{C} \times \mathbf{H}_h$ with $(u_h, z_h) \neq \mathbf{0}$ such that

$$\mathcal{A}^h((u_h, z_h), (w_h, v_h)) = \lambda_h \mathcal{B}^h((u_h, z_h), (w_h, v_h)) \quad \forall (w_h, v_h) \in \mathbf{H}_h. \quad (4.14)$$

In order to characterize the spectrum of Problem 3, we introduce the discrete version of the solution operator \mathbf{T} .

$$\begin{aligned} \mathbf{T}_h : \mathbf{H} &\longrightarrow \mathbf{H}_h \subseteq \mathbf{H} \\ (f, g) &\longmapsto \mathbf{T}_h(f, g) = (\widehat{u}_h, \widehat{z}_h), \end{aligned}$$

defined as the unique solution of the following source problem (see Lemma 4):

$$\mathcal{A}^h((\widehat{u}_h, \widehat{z}_h), (w_h, v_h)) = \mathcal{B}^h((f, g), (w_h, v_h)) \quad \forall (w_h, v_h) \in \mathbf{H}_h. \quad (4.15)$$

We have that operator \mathbf{T}_h is well defined and uniformly bounded. Once more, as in the continuous case, we have that $(\lambda_h, (u_h, z_h))$ solves Problem 3 if and only if $(\mu_h, (u_h, z_h))$ is an eigenpair of \mathbf{T}_h , i.e., $\mathbf{T}_h(u_h, z_h) = \mu_h(u_h, z_h)$, with $\mu_h := 1/\lambda_h$.

5 Convergence and Error Estimates

In what follows, we focus on proving the convergence and error analysis of the proposed virtual element scheme for the transmission eigenvalue problem. First, we recall some well-known results on star-shaped polygons [12].

Proposition 2 *There exists a positive constant C , such that for all $w \in \mathbf{H}^\delta(E)$ there exists $w_\pi \in \mathbb{P}_k(E)$, $k \in \mathbb{N}$ such that*

$$|w - w_\pi|_{\ell, E} \leq Ch_E^{\delta-\ell} |w|_{\delta, E} \quad 0 \leq \delta \leq k+1, \ell = 0, \dots, [\delta],$$

with $[\delta]$ denoting largest integer equal to or smaller than $\delta \in \mathbb{R}_+$.

Now, we consider interpolation operators in the virtual element spaces W_h and V_h . First, for the C^1 interpolation operator, we have the following result and the proof can be found in [2, Proposition 3.1].

Proposition 3 *Assume \mathbf{A}_1 – \mathbf{A}_2 are satisfied, let $w \in \mathbf{H}^\varepsilon(\Omega)$ with $\varepsilon \in [2, 3]$. Then, there exist $w_I \in W_h$ and $C > 0$, independent of h , such that*

$$\|w - w_I\|_{\ell, \Omega} \leq Ch^{\varepsilon-\ell} \|w\|_{\varepsilon, \Omega}, \quad \ell = 0, 1, 2.$$

For the C^0 interpolation operator, we have the following result whose proof can be obtained by repeating the arguments in [17, Theorem 11] (see also [34, Proposition 4.2]).

Proposition 4 *Assume \mathbf{A}_1 – \mathbf{A}_2 are satisfied, let $v \in \mathbf{H}^2(\Omega)$. Then, there exist $v_I \in V_h$ and $C > 0$, independent of h , such that*

$$\|v - v_I\|_{0, \Omega} + h|v - v_I|_{1, \Omega} \leq Ch^2 \|v\|_{2, \Omega}.$$

The following lemma shows that \mathbf{T}_h converges in norm to \mathbf{T} as h goes to zero.

Lemma 5 *There exist $s \in (0, 1]$ and a positive constant $C > 0$ that depends on the index of refraction n , both independent of the meshsize h such that: For all $(f, g) \in \mathbf{H}$, if $(\hat{u}, \hat{z}) = \mathbf{T}(f, g)$ and $(\hat{u}_h, \hat{z}_h) = \mathbf{T}_h(f, g)$, then*

$$\|(\mathbf{T} - \mathbf{T}_h)(f, g)\|_{\mathbf{H}} \leq Ch^s \|(f, g)\|_{\mathbf{H}}.$$

Proof Let $(f, g) \in \mathbf{H}$. As a consequence of Lemma 2, there exists $s \in (0, 1]$ such that $(\hat{u}, \hat{z}) \in \mathbf{H}^{2+s}(\Omega) \times \mathbf{H}^2(\Omega)$. Let $(\hat{u}_I, \hat{z}_I) \in \mathbf{H}_h$ be such that Propositions 3 and 4 hold true. By using the triangle inequality, we have

$$\begin{aligned} \|(\mathbf{T} - \mathbf{T}_h)(f, g)\|_{\mathbf{H}} &= \|(\hat{u}, \hat{z}) - (\hat{u}_h, \hat{z}_h)\|_{\mathbf{H}} \\ &\leq \|(\hat{u}, \hat{z}) - (\hat{u}_I, \hat{z}_I)\|_{\mathbf{H}} + \|(\hat{u}_I, \hat{z}_I) - (\hat{u}_h, \hat{z}_h)\|_{\mathbf{H}}. \end{aligned} \quad (5.1)$$

We define $(w_h, v_h) := (\hat{u}_h - \hat{u}_I, \hat{z}_h - \hat{z}_I) \in \mathbf{H}_h$. Then, for all $\hat{u}_\pi \in \mathbb{P}_2(E)$ and $\hat{z}_\pi \in \mathbb{P}_1(E)$, from (4.11) (ellipticity of the sesquilinear form $\mathcal{A}^h(\cdot, \cdot)$), we have

$$\begin{aligned} \alpha \|(w_h, v_h)\|_{\mathbf{H}}^2 &\leq \mathcal{A}^h((w_h, v_h), (w_h, v_h)) \\ &= \mathcal{A}^h((\hat{u}_h, \hat{z}_h), (w_h, v_h)) - \mathcal{A}^h((\hat{u}_I, \hat{z}_I), (w_h, v_h)) \\ &= \mathcal{B}^h((f, g), (w_h, v_h)) - \sum_{E \in \mathcal{T}_h} \left\{ \mathcal{A}_E^{1h}(\hat{u}_I, w_h) + \mathcal{A}_E^{2h}(\hat{z}_I, v_h) \right\} \\ &= \mathcal{B}^h((f, g), (w_h, v_h)) - \sum_{E \in \mathcal{T}_h} \left\{ \mathcal{A}_E^{1h}(\hat{u}_I - \hat{u}_\pi, w_h) + \mathcal{A}_E^1(\hat{u}_\pi - \hat{u}, w_h) \right\} \end{aligned} \quad (5.2)$$

$$\begin{aligned}
& + \{ \mathcal{A}_E^{2h}(\widehat{z}_I - \widehat{z}_\pi, v_h) + \mathcal{A}_E^2(\widehat{z}_\pi - \widehat{z}, v_h) \} + \{ \mathcal{A}_E^1(\widehat{u}, w_h) + \mathcal{A}_E^2(\widehat{z}, v_h) \} \\
= & \sum_{E \in \mathcal{T}_h} \underbrace{ \{ \mathcal{B}_E^h((f, g), (w_h, v_h)) - \mathcal{B}_E((f, g), (w_h, v_h)) \} }_{R_E^1} \\
& - \sum_{E \in \mathcal{T}_h} \underbrace{ \{ \mathcal{A}_E^{1h}(\widehat{u}_I - \widehat{u}_\pi, w_h) + \mathcal{A}_E^1(\widehat{u}_\pi - \widehat{u}, w_h) \} }_{R_E^2} \\
& - \sum_{E \in \mathcal{T}_h} \underbrace{ \{ \mathcal{A}_E^{2h}(\widehat{z}_I - \widehat{z}_\pi, v_h) + \mathcal{A}_E^2(\widehat{z}_\pi - \widehat{z}, v_h) \} }_{R_E^3}, \tag{5.3}
\end{aligned}$$

where we have used the definition of the solution operators \mathbf{T} and \mathbf{T}_h and the consistency properties (4.6) and (4.7). In what follows, we will bound the terms R_E^1, R_E^2 and R_E^3 .

We start with the term R_E^1 : we use the definitions of $\mathcal{B}_E(\cdot, \cdot)$ and $\mathcal{B}_E^h(\cdot, \cdot)$ (cf. (2.7) and (4.5), respectively) to obtain

$$\begin{aligned}
R_E^1 &= \int_E \underbrace{ \left\{ \frac{n}{n-1} \Pi_E^0 \Delta f \Pi_E^2 \bar{w}_h - \frac{n}{n-1} \Delta f \bar{w}_h \right\} }_{R_E^{11}} \\
&+ \int_E \underbrace{ \left\{ \frac{1}{n-1} \Pi_E^2 f \Pi_E^0 \Delta \bar{w}_h - \frac{1}{n-1} f \Delta \bar{w}_h \right\} }_{R_E^{12}} \\
&+ \int_E \underbrace{ \left\{ \frac{n}{n-1} \Pi_E^1 g \Pi_E^2 \bar{w}_h - \frac{n}{n-1} g \bar{w}_h \right\} }_{R_E^{13}} + \int_E \underbrace{ \left\{ \Pi_E^2 f \Pi_E^1 \bar{v}_h - f \bar{v}_h \right\} }_{R_E^{14}} \\
&=: R_E^{11} + R_E^{12} + R_E^{13} + R_E^{14}. \tag{5.4}
\end{aligned}$$

Thus, we have to bound each term on the right-hand side above. First, the terms R_E^{11} and R_E^{12} can be bounded repeating the same arguments in [38, Lemma 4.2]. We obtain

$$R_E^{11} \leq Ch_E \left\| \frac{n}{n-1} \right\|_{L^\infty(E)} |f|_{2,E} \{ |w_h|_{2,E} + |w_h|_{1,E} \}, \tag{5.5}$$

and

$$R_E^{12} \leq Ch_E \left\| \frac{n}{n-1} \right\|_{L^\infty(E)} \{ |f|_{2,E} + |f|_{1,E} \} |w_h|_{2,E}. \tag{5.6}$$

Now, to bound the term R_E^{13} , we use the fact that n is piecewise constant, the definition of Π_E^1 and Π_E^2 , the Cauchy-Schwarz inequality and $n/(n-1) \in L^\infty(\Omega)$ to have

$$R_E^{13} = \int_E \left\{ \frac{n}{n-1} \Pi_E^1 g \Pi_E^2 \bar{w}_h - \frac{n}{n-1} g \bar{w}_h \right\} \tag{5.7}$$

$$\begin{aligned}
&= \int_E \frac{n}{n-1} \Pi_E^1 g (\Pi_E^2 \bar{w}_h - \Pi_E^1 \bar{w}_h) + \int_E \frac{n}{n-1} (\Pi_E^1 g - g) (\Pi_E^1 \bar{w}_h - \bar{w}_h) \\
&\leq Ch_E^2 \left\| \frac{n}{n-1} \right\|_{L^\infty(E)} \|g\|_{0,E} |\bar{w}_h|_{2,E}. \tag{5.8}
\end{aligned}$$

For the term R_E^{14} , we use the definition of Π_E^2 and the Cauchy-Schwarz inequality to obtain

$$R_E^{14} = \int_E \left\{ \Pi_E^2 f \Pi_E^1 \bar{v}_h - f \bar{v}_h \right\} \tag{5.9}$$

$$\begin{aligned}
&= \int_E (\Pi_E^2 f - \Pi_E^1 f) \Pi_E^1 \bar{v}_h + \int_E (\Pi_E^1 f - f) (\Pi_E^1 \bar{v}_h - \bar{v}_h) \\
&\leq Ch_E^2 |f|_{2,E} \|\bar{v}_h\|_{0,E}.
\end{aligned} \tag{5.10}$$

Now, taking sum over E in the terms (5.5),(5.6),(5.8) and (5.10) and applying Cauchy-Schwarz inequality for sequences we obtain

$$\sum_{E \in \mathcal{T}_h} R^{1,E} \leq Ch \max \left\{ \left\| \frac{n}{n-1} \right\|_{L^\infty(E)}, \left\| \frac{1}{n-1} \right\|_{L^\infty(E)} \right\} \|(f, g)\|_{\mathbf{H}} \|(w_h, v_h)\|_{\mathbf{H}}. \tag{5.11}$$

Next, we bound the term $\sum_{E \in \mathcal{T}_h} R_E^2$. By using the Cauchy-Schwarz inequality and the stability and boundedness properties of $\mathcal{A}_E^1(\cdot, \cdot)$ (cf. (4.8)), we obtain

$$\begin{aligned}
\sum_{E \in \mathcal{T}_h} R_E^2 &= \sum_{E \in \mathcal{T}_h} \left\{ \mathcal{A}_E^{1h}(\hat{u}_I - \hat{u}_\pi, w_h) + \mathcal{A}_1^E(\hat{u}_\pi - \hat{u}, w_h) \right\} \\
&\leq \sum_{E \in \mathcal{T}_h} \left\{ |\hat{u}_I - \hat{u}_\pi|_{2,E} |w_h|_{2,E} + |\hat{u}_\pi - \hat{u}|_{2,E} |w_h|_{2,E} \right\} \\
&\leq \sum_{E \in \mathcal{T}_h} \left\{ |\hat{u}_I - \hat{u}|_{2,E} + 2|\hat{u} - \hat{u}_\pi|_{2,E} \right\} |w_h|_{2,E}.
\end{aligned}$$

Next, from Propositions 2, 3, and Lemma 2, we have

$$\sum_{E \in \mathcal{T}_h} R_E^2 \leq Ch^s \|(f, g)\|_{\mathbf{H}} \|(w_h, v_h)\|_{\mathbf{H}}. \tag{5.12}$$

To bound the last term: $\sum_{E \in \mathcal{T}_h} R_E^3$, we use the Cauchy-Schwarz inequality and we add and subtract the term \hat{z} , to obtain

$$\begin{aligned}
\sum_{E \in \mathcal{T}_h} R_E^3 &= \sum_{E \in \mathcal{T}_h} \left\{ \mathcal{A}_E^{2h}(\hat{z}_I - \hat{z}_\pi, v_h) + \mathcal{A}_E^2(\hat{z}_\pi - \hat{z}, v_h) \right\} \\
&\leq \sum_{E \in \mathcal{T}_h} \left\{ \|\hat{z}_I - \hat{z}\|_{0,E} + 2\|\hat{z} - \hat{z}_\pi\|_{0,E} \right\} \|v_h\|_{0,E}.
\end{aligned}$$

Hence, applying Proposition 2 and Proposition 4 (with $\ell = 0$), and Lemma 2 in the above inequality we deduce

$$\sum_{E \in \mathcal{T}_h} R_E^3 \leq Ch^2 \|(f, g)\|_{\mathbf{H}} \|(w_h, v_h)\|_{\mathbf{H}}. \tag{5.13}$$

Now, by combining (5.3) with (5.11), (5.12) and (5.13), we obtain

$$\|(\hat{u}_I, \hat{z}_I) - (\hat{u}_h, \hat{z}_h)\|_{\mathbf{H}} \leq \frac{C}{\alpha} h^s \|(f, g)\|_{\mathbf{H}}. \tag{5.14}$$

Finally, we complete the proof from (5.1), (5.14), Propositions 3, 4 and Lemma 2.

Since Problem 1 is nonselfadjoint, we need to analyze the adjoint solution operators (continuous and discrete). Thus, first we introduce the adjoint solution operator \mathbf{T}^* :

$$\begin{aligned}
\mathbf{T}^* : \mathbf{H} &\longrightarrow \mathbf{H} \\
(f, g) &\longmapsto \mathbf{T}^*(f, g) = (\hat{u}^*, \hat{z}^*)
\end{aligned}$$

defined as the unique solution (see Lemma 1) of the following source problem:

$$\mathcal{A}((w, v), (\widehat{u}^*, \widehat{z}^*)) = \mathcal{B}((w, v), (f, g)) \quad \forall (w, v) \in \mathbf{H}. \quad (5.15)$$

It is simple to prove that if μ is an eigenvalue of \mathbf{T} with multiplicity m , $\bar{\mu}$ is an eigenvalue of \mathbf{T}^* with the same multiplicity m . In addition, a result analogous to Lemma 2 can be proven in this case.

Lemma 6 *There exist $s \in (0, 1]$ and a positive constant C depending on the index of refraction n such that for all $(f, g) \in \mathbf{H}$, the unique solution $(\widehat{u}^*, \widehat{z}^*)$ of (5.15) satisfies $(\widehat{u}^*, \widehat{z}^*) \in \mathbf{H}^{2+s}(\Omega) \times \mathbf{H}_0^2(\Omega)$ and*

$$\|\widehat{u}^*\|_{2+s, \Omega} + \|\widehat{z}^*\|_{2, \Omega} \leq C\|(f, g)\|_{\mathbf{H}}.$$

Now, let $\mathbf{T}_h^* : \mathbf{H} \rightarrow \mathbf{H}_h \subseteq \mathbf{H}$ the adjoint operator of \mathbf{T}_h . This operator is defined by $\mathbf{T}_h^*(f, g) := (\widehat{u}_h^*, \widehat{z}_h^*)$, where $(\widehat{u}_h^*, \widehat{z}_h^*)$ is the unique solution of the following source problem:

$$\mathcal{A}^h((w_h, v_h), (\widehat{u}_h^*, \widehat{z}_h^*)) = \mathcal{B}^h((w_h, v_h), (f, g)) \quad \forall (w_h, v_h) \in \mathbf{H}_h. \quad (5.16)$$

The next result establishes the convergence in norm of the operator \mathbf{T}_h^* to \mathbf{T}^* as h goes to zero. The proof follows repeating the same arguments as those used to prove Lemma 5.

Lemma 7 *There exist a positive constant C that depends on the index of refraction n and $s \in (0, 1]$, both independent of the meshsize h , such that: For all $(f, g) \in \mathbf{H}$, if $(\widehat{u}^*, \widehat{z}^*) = \mathbf{T}^*(f, g)$ and $(\widehat{u}_h^*, \widehat{z}_h^*) = \mathbf{T}_h^*(f, g)$, then*

$$\|(\mathbf{T}^* - \mathbf{T}_h^*)(f, g)\|_{\mathbf{H}} \leq Ch^s\|(f, g)\|_{\mathbf{H}}.$$

Now we are ready to prove the convergence and obtain error estimates of the eigenvalue problem. First, we recall that in [39], the author gives the convergence conditions under which the eigenvalues of \mathbf{T}_h converge to those of \mathbf{T} , where \mathbf{T} is a nonselfadjoint compact operator (see also [4]).

We first recall the definition of the spectral projectors. Let μ be a nonzero eigenvalue of \mathbf{T} with algebraic multiplicity m . Denote by \mathcal{C} a circle in the complex plane centered at μ such that no other eigenvalue lies inside \mathcal{C} . Define the spectral projection \mathcal{E} as

$$\mathcal{E} := (2\pi i)^{-1} \int_{\mathcal{C}} (z - \mathbf{T})^{-1} dz.$$

In a similar way, we define the spectral projector \mathcal{E}^* as follows:

$$\mathcal{E}^* := (2\pi i)^{-1} \int_{\mathcal{C}} (z - \mathbf{T}^*)^{-1} dz.$$

We have that \mathcal{E} and \mathcal{E}^* are projections onto the space of generalized eigenvectors $R(\mathcal{E})$ and $R(\mathcal{E}^*)$, respectively. It is easy to check that $R(\mathcal{E}), R(\mathcal{E}^*) \in \mathbf{H}^{2+s}(\Omega) \times \mathbf{H}^{2+s}(\Omega)$ (see Lemma 3).

As a consequence of the convergence in norm of \mathbf{T}_h to \mathbf{T} (cf. Lemma 5), there exist m eigenvalues (which lie in \mathcal{C}) $\mu_h^{(1)}, \dots, \mu_h^{(m)}$ of \mathbf{T}_h (repeated according to their respective multiplicities) which will converge to μ as h goes to zero.

Analogously, we introduce the following spectral projector $\mathcal{E}_h := (2\pi i)^{-1} \int_{\mathcal{C}} (z - \mathbf{T}_h)^{-1} dz$, which is a projector onto the invariant subspace $R(\mathcal{E}_h)$ of \mathbf{T}_h spanned by the generalized eigenvectors of \mathbf{T}_h corresponding to $\mu_h^{(1)}, \dots, \mu_h^{(m)}$.

We recall the definition of the gap $\widehat{\delta}$ between two closed subspaces \mathcal{X} and \mathcal{Y} of a Hilbert space \mathbf{H} :

$$\widehat{\delta}(\mathcal{X}, \mathcal{Y}) := \max\{\delta(\mathcal{X}, \mathcal{Y}), \delta(\mathcal{Y}, \mathcal{X})\}, \quad \text{where} \quad \delta(\mathcal{X}, \mathcal{Y}) := \sup_{x \in \mathcal{X}: \|x\|_{\mathbf{H}}=1} \left(\inf_{y \in \mathcal{Y}} \|x - y\|_{\mathbf{H}} \right).$$

The following error estimates for the approximation of eigenvalues and eigenfunctions hold true.

Theorem 1 *There exists a strictly positive constant C that depends on the index of refraction such that*

$$\widehat{\delta}(R(\mathcal{E}), R(\mathcal{E}_h)) \leq Ch^s, \quad (5.17)$$

$$|\mu - \widehat{\mu}_h| \leq Ch^{2s}, \quad (5.18)$$

where $\widehat{\mu}_h := \frac{1}{m} \sum_{i=1}^m \mu_h^{(i)}$ and $s \in (0, 1]$ as in Lemma 3.

Proof The proof follows repeating the same arguments used in [38, Theorem 4.1].

6 Numerical Results

We report in this section a series of numerical tests to approximate the transmission eigenvalues k described in the system (2.1a)-(2.1d), using the Virtual Element Method proposed and analyzed in this paper. Thus, we have implemented in a MATLAB code the proposed VEM on arbitrary polygonal meshes (see [6]). Moreover, the spectral problem is solved by using the built-in function *eigs* in MATLAB.

In order to compare our results with the ones reported in the literature of the transmission eigenvalue problem, we have chosen three configurations for the computational domain Ω :

$$\text{Square domain: } \Omega_{\mathbf{S}} := (0, 1)^2, \quad (6.1)$$

$$\text{L-shaped domain: } \Omega_{\mathbf{L}} := (-1/2, 1/2)^2 \setminus ([0, 1/2] \times [-1/2, 0]), \quad (6.2)$$

$$\text{Circular domain: } \Omega_{\mathbf{C}} := \{(x, y) \in \mathbb{R}^2 : x^2 + y^2 < 1/4\}. \quad (6.3)$$

Additionally, we have tested the method by using different families of polygonal meshes (see Figure 6.1):

- Ω_h^{tz} : Trapezoidal meshes;
- Ω_h^t : Triangular meshes;
- Ω_h^{hex} : Hexagonal meshes made of convex hexagons;
- Ω_h^v : Voronoi meshes which have been partitioned with N_P number of polygons.

On the other hand, to complete the choice of the VEM scheme, we had to fix the forms $\mathcal{S}_E^\Delta(\cdot, \cdot)$ and $\mathcal{S}_E^0(\cdot, \cdot)$ satisfying (4.1) and (4.2), respectively. In particular, we have considered the forms

$$\mathcal{S}_E^\Delta(u_h, w_h) := h_E^{-2} \sum_{i=1}^{N_v^E} [u_h(\mathbf{v}_i)w_h(\mathbf{v}_i) + h_{v_i}^2 \nabla u_h(\mathbf{v}_i) \cdot \nabla w_h(\mathbf{v}_i)] \quad \forall u_h, w_h \in W_h(E),$$

$$\mathcal{S}_E^0(z_h, v_h) := h_E^2 \sum_{i=1}^{N_v^E} z_h(\mathbf{v}_i)v_h(\mathbf{v}_i) \quad \forall z_h, v_h \in V_h(E),$$

where $\mathbf{v}_1, \dots, \mathbf{v}_{N_v^E}$ are the vertices of E , h_{v_i} corresponds to the maximum diameter of the elements with \mathbf{v}_i as a vertex. With the above choice, we have that (4.1) and (4.2) are satisfied (see [2,1] for further details).

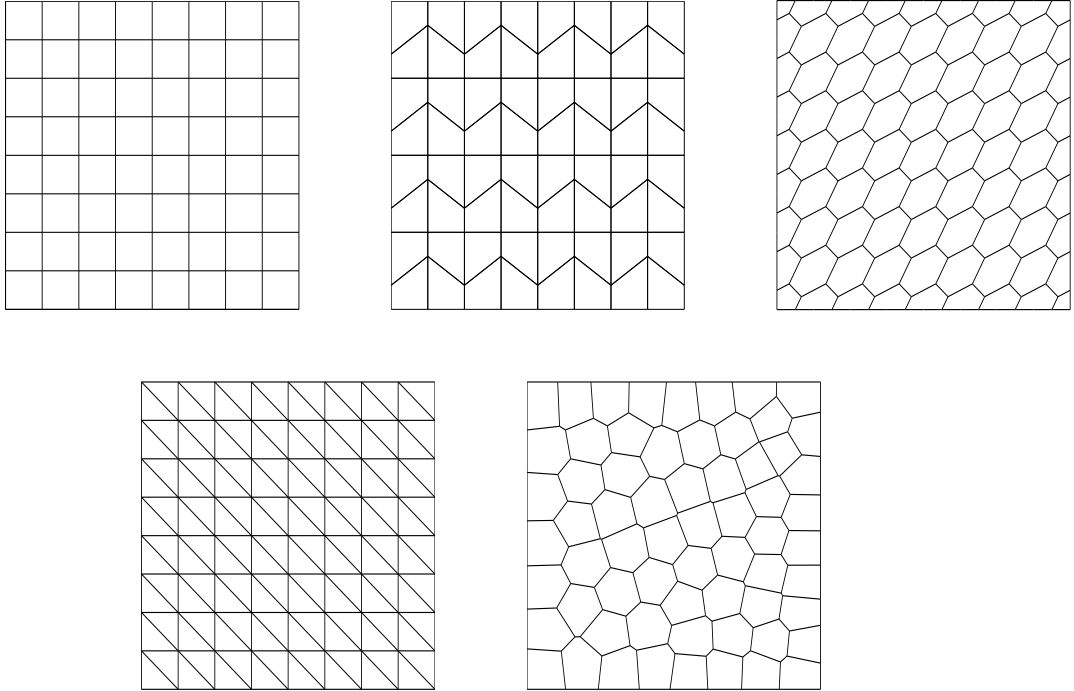


Fig. 6.1 Sample meshes: Ω_h^s (top left), Ω_h^{tz} (top middle), Ω_h^{hex} (top right), Ω_h^t (bottom left) and Ω_h^v (bottom right).

6.1 Test 1: Square domain Ω_S

In this numerical test, we have computed the three lowest transmission eigenvalues k_{ih} , $i = 1, 2, 3$, with three different index of refraction n on the unit square Ω_S .

We report in Table 6.1 the three lowest in magnitude transmission eigenvalues computed with the virtual scheme introduced in this work. The table includes orders of convergence as well as accurate values extrapolated by means of a least-squares fitting. We consider three different values for the index of refraction and three different families of meshes. We compare the results with the ones reported in references [28, 36, 23, 20, 38].

It can be seen from Table 6.1 that the eigenvalue approximation order of the proposed method is quadratic and that the results obtained by the different methods agree perfectly well. We illustrate in Figure 6.2 the eigenfunctions corresponding to the four lowest transmission eigenvalues obtained with meshes Ω_h^{hex} and $n = 16$.

6.2 Test 2: L-shaped domain Ω_L

In order to compare our results with those presented in the literature of the transmission eigenvalue (for instance [15, 36, 38]), in this numerical test we have computed the three lowest transmission eigenvalues k_{ih} , $i = 1, 2, 3$, with the index of refraction $n = 16$ on the L-shaped domain Ω_L and with meshes Ω_h^t and Ω_h^s .

We report in Table 6.2 the three lowest in magnitude transmission eigenvalues, for $n = 16$, and computed with the VEM (4.14) on the meshes Ω_h^t (triangular meshes), and Ω_h^s (square meshes) (cf. Figure 6.1). The table includes orders of convergence as well as accurate values extrapolated by means

Table 6.1 Test 1: Lowest transmission eigenvalues k_{ih} , $i = 1, 2, 3$, computed on different families of meshes, on the square domain Ω_S and with different index of refraction.

n	Ω_S		k_{1h}	k_{2h}	k_{3h}	
		$N = 32$	4.2551-1.1855i	4.2551+1.1855i	5.5954	
		$N = 64$	4.2674-1.1573 i	4.2674+1.1573 i	5.5048	
		$N = 128$	4.2706-1.1499i	4.2706+1.1499i	5.4832	
		Order	1.94	1.94	2.07	
		4	Ω_h^{hex}	Extrap.	4.2718-1.1473i	4.2718+1.1473i
		[28]	[Multigrid FEM]	4.2717-1.1474i	4.2717+1.1474i	5.4761
		[36]	[C ¹ -C ⁰ -VEM]	4.2718-1.1475i	4.2718+1.1475i	5.4779
		[38]	[C ¹ -C ¹ -VEM]	4.2717-1.1474i	4.2717+1.1474i	5.4768
		$N = 32$	1.8897	2.4607	2.4660	
		$N = 64$	1.8821	2.4483	2.4496	
		$N = 128$	1.8802	2.4452	2.4456	
		Order	2.03	2.03	2.02	
		16	Ω_h^{tz}	Extrap.	1.8796	2.4442
		[23]	[Argyris method]	1.8651	2.4255	2.4271
		[36]	[C ¹ -C ⁰ -VEM]	1.8796	2.4442	2.4442
		[38]	[C ¹ -C ¹ -VEM]	1.8796	2.4442	2.4442
		$N = 32$	2.8329	3.5512	3.5570	
		$N = 64$	2.8248	3.5418	3.5434	
		$N = 128$	2.8228	3.5395	3.5401	
		Order	2.03	2.03	2.03	
		$8 + x - y$	Ω_h^t	Extrap.	2.8222	3.5387
		[20]	[C ⁰ -FEM]	2.8221	3.5383	3.5387
		[38]	[C ¹ -C ¹ -VEM]	2.8222	3.5387	3.5390

of a least-squares fitting. Once again, the last rows show the values obtained by extrapolating those computed with different methods presented in [15, 36, 38].

Table 6.2 Test 2: Lowest transmission eigenvalues k_{ih} , $i = 1, 2, 3$, computed on meshes Ω_h^t and Ω_h^s with an index of refraction $n = 16$ on the L-shaped domain Ω_L .

n	Ω_L		k_{1h}	k_{2h}	k_{3h}
16	Ω_h^t	$N = 32$	2.9706	3.1472	3.4237
		$N = 64$	2.9589	3.1414	3.4141
		$N = 128$	2.9549	3.1400	3.4114
		Order	1.53	1.96	1.82
		Extrap.	2.9528	3.1394	3.4103
16	Ω_h^s	$N = 32$	2.9678	3.1481	3.4281
		$N = 64$	2.9571	3.1414	3.4149
		$N = 128$	2.9539	3.1399	3.4114
		Order	1.76	2.11	1.94
		Extrap.	2.9526	3.1394	3.4102
	[15]	[Argyris method]	2.9553	-	-
	[36]	[C ¹ -C ⁰ -VEM]	2.9527	3.1395	3.4103
	[38]	[C ¹ -C ¹ -VEM]	2.9528	3.1394	3.4103

It can be seen from Table 6.2 that the results obtained by our method agree perfectly well with those reported in [15, 36, 38]. Moreover, we observe that for the first transmission eigenvalue the associated eigenfunction presents a singularity. Thus, the order of convergence is affected by this singularity and we obtain an order close to 1.54, which corresponds to the Sobolev regularity for the biharmonic equation in both cases. In addition, the method converges with larger orders for the rest of the transmission eigenvalues (k_{2h} and k_{3h}).

Figure 6.3 shows the eigenfunctions corresponding to the four lowest transmission eigenvalues with index of refraction $n = 16$ on an L-shaped domain with meshes Ω_h^t .

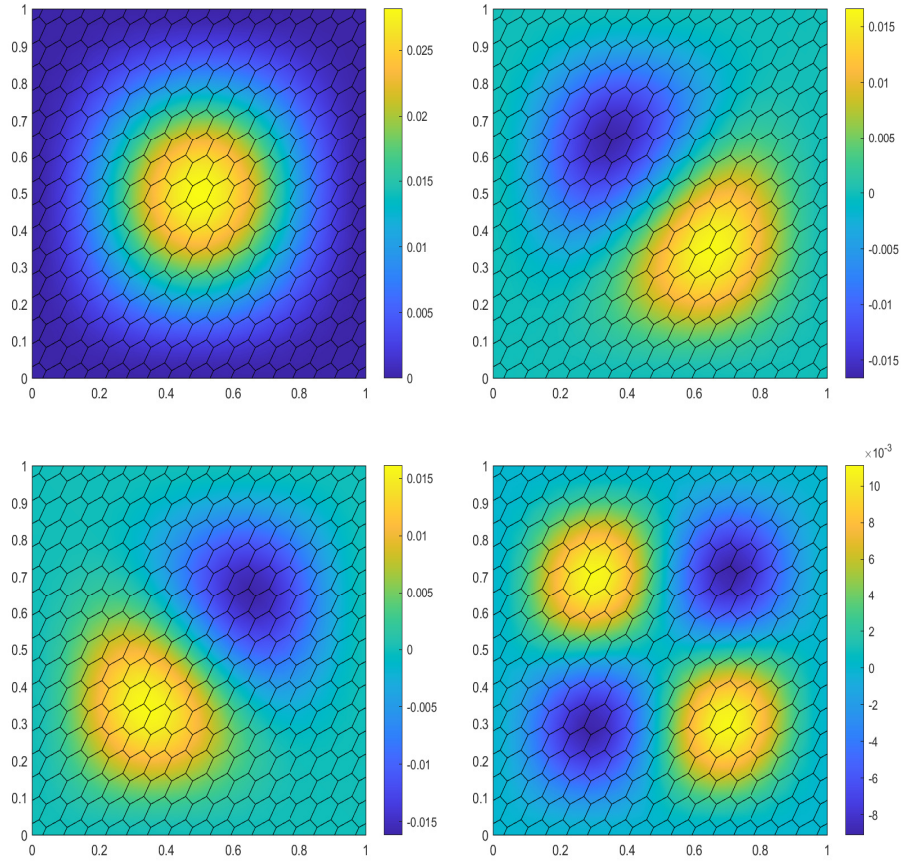


Fig. 6.2 Test 1. Eigenfunctions: u_{1h} (top left), u_{2h} (top right), u_{3h} (bottom left) and u_{4h} (bottom right) obtained with meshes Ω_h^{hex} and $n = 16$.

6.3 Test 3: Circular domain Ω_C

Finally, we have computed the three lowest transmission eigenvalues k_{ih} , $i = 1, 2, 3$, with three different index of refraction n on the circular domain Ω_C . The domain Ω_C is partitioned using a sequence of polygonal meshes (Centroidal Voronoi tessellation) created with PolyMesher [43].

We report in Table 6.3 the three lowest in magnitude transmission eigenvalues computed with the virtual scheme introduced in this work. The table includes orders of convergence as well as accurate values extrapolated by means of a least-squares fitting. We consider three different values for the index of refraction and three different families of meshes. Once again, a quadratic order of convergence can be clearly appreciated from Table 6.3. Moreover, Figure 6.4 shows the eigenfunctions corresponding to the four lowest transmission eigenvalues on a circular domain with index of refraction $n = 16$.

Acknowledgements The first author was partially supported by the National Agency for Research and Development, ANID-Chile through FONDECYT project 1180913 and by project AFB170001 of the PIA Program: Concurso Apoyo a Centros Científicos y Tecnológicos de Excelencia con Financiamiento Basal.

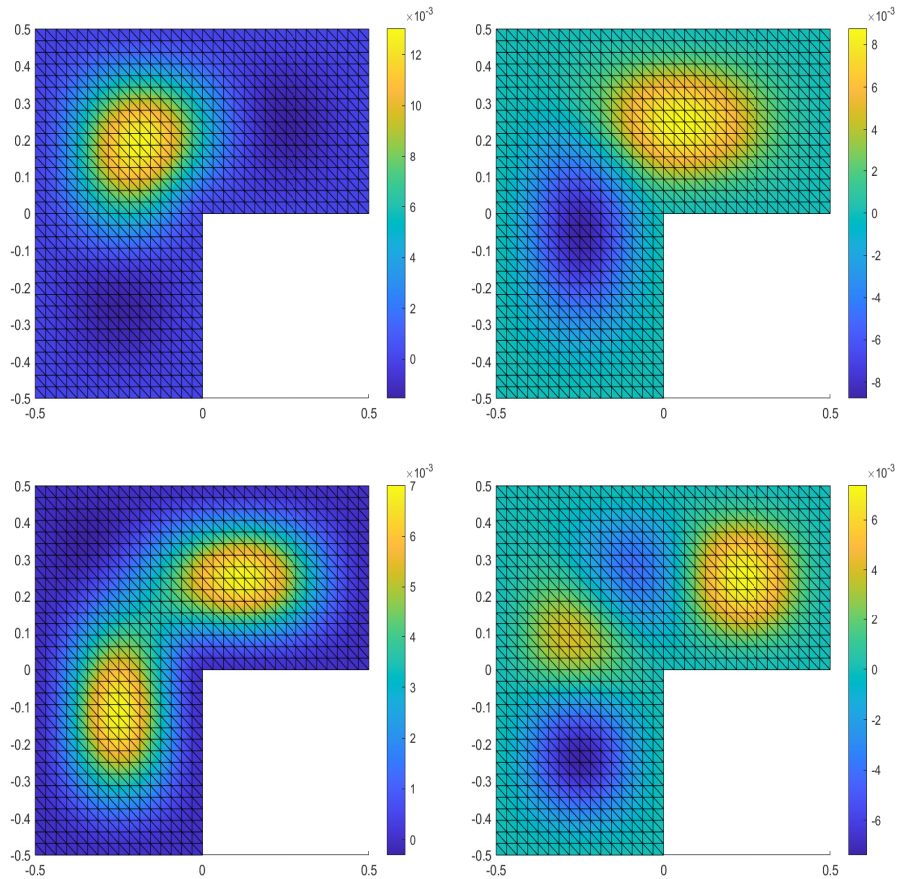


Fig. 6.3 Test 2. Eigenfunctions: u_{1h} (top left), u_{2h} (top right), u_{3h} (bottom left) and u_{4h} (bottom right) obtained with meshes Ω_h^t and $n = 16$.

References

1. B. Ahmad, A. Alsaedi, F. Brezzi, L. D. Marini, and A. Russo. Equivalent projectors for virtual element methods. *Comput. Math. Appl.*, 66(3):376–391, 2013.
2. P. F. Antonietti, L. Beirão da Veiga, S. Scacchi, and M. Verani. A C^1 virtual element method for the Cahn-Hilliard equation with polygonal meshes. *SIAM J. Numer. Anal.*, 54(1):34–56, 2016.
3. P. F. Antonietti, G. Manzini, and M. Verani. The fully nonconforming virtual element method for biharmonic problems. *Math. Models Methods Appl. Sci.*, 28(2):387–407, 2018.
4. I. Babuška and J. Osborn. *Eigenvalue Problems*, in *Handbook of Numerical Analysis, Vol. II*, P.G. Ciarlet and J.L. Lions, eds. pp. 641–787. North-Holland, Amsterdam, 1991.
5. L. Beirão da Veiga, F. Brezzi, A. Cangiani, G. Manzini, L. D. Marini, and A. Russo. Basic principles of virtual element methods. *Math. Models Methods Appl. Sci.*, 23(1):199–214, 2013.
6. L. Beirão da Veiga, F. Brezzi, L. D. Marini, and A. Russo. The hitchhiker’s guide to the virtual element method. *Math. Models Methods Appl. Sci.*, 24(8):1541–1573, 2014.
7. L. Beirão da Veiga, D. Mora, and G. Rivera. Virtual elements for a shear-deflection formulation of Reissner-Mindlin plates. *Math. Comp.*, 88(315):149–178, 2019.
8. L. Beirão da Veiga, D. Mora, G. Rivera, and R. Rodríguez. A virtual element method for the acoustic vibration problem. *Numer. Math.*, 136(3):725–763, 2017.
9. L. Beirão da Veiga, D. Mora, and G. Vacca. The Stokes complex for virtual elements with application to Navier-Stokes flows. *J. Sci. Comput.*, 81(2):990–1018, 2019.
10. H. Blum and R. Rannacher. On the boundary value problem of the biharmonic operator on domains with angular corners. *Math. Methods Appl. Sci.*, 2(4):556–581, 1980.
11. D. Boffi, F. Gardini, and L. Gastaldi. Approximation of PDE eigenvalue problems involving parameter dependent matrices. *Calcolo*, 57(4):1–21, 2020.
12. S. C. Brenner and L. R. Scott. *The Mathematical Theory of Finite Element Methods*. Springer, New York, 2008.

Table 6.3 Test 3: Lowest transmission eigenvalues k_{ih} , $i = 1, 2, 3$, computed on different families of meshes, on the circular domain Ω_C and with different index of refraction.

n	Ω_C		k_{1h}	k_{2h}	k_{3h}
		$N_P = 1024$	4.5271-1.1913i	4.5271+1.1913i	5.9298
		$N_P = 4096$	4.5393-1.1667i	4.5393+1.1667i	5.8351
		$N_P = 16384$	4.5422-1.1604i	4.5422+1.1604i	5.8125
		Order	1.97	1.97	2.07
		Extrap.	4.5431-1.1582i	4.5431+1.1582i	5.8055
4	Ω_h^v	[26] $[C^0\text{IPG}]$	4.5434-1.1583i	-	-
		[38] $[C^1-C^1\text{-VEM}]$	4.5431-1.1582i	4.5431+1.1582i	5.8054
		$N_P = 1024$	1.9961	2.6301	2.6308
		$N_P = 4096$	1.9900	2.6173	2.6173
		$N_P = 16384$	1.9885	2.6140	2.6140
		Order	2.03	1.97	2.03
		Extrap.	1.9880	2.6129	2.6129
16	Ω_h^v	[20] $[C^0\text{-FEM}]$	1.9879	2.6124	2.6124
		[36] $[C^1-C^0\text{-VEM}]$	1.9880	2.6129	2.6129
		[38] $[C^1-C^1\text{-VEM}]$	1.9880	2.6129	2.6129
		$N_P = 1024$	3.0126	3.7918	3.7956
		$N_P = 4096$	2.9857	3.7805	3.7834
		$N_P = 16384$	2.9792	3.7778	3.7806
		Order	2.06	2.05	2.12
		Extrap.	2.9772	3.7769	3.7798
8 + x - y	Ω_h^v	[38] $[C^1-C^1\text{-VEM}]$	1.9880	2.6129	2.6129

13. F. Brezzi and L. D. Marini. Virtual element methods for plate bending problems. *Comput. Methods Appl. Mech. Engrg.*, 253:455–462, 2013.
14. F. Cakoni and R. Kress. A boundary integral equation method for the transmission eigenvalue problem. *Appl. Anal.*, 96(1):23–38, 2017.
15. F. Cakoni, P. Monk, and J. Sun. Error analysis for the finite element approximation of transmission eigenvalues. *Comput. Methods Appl. Math.*, 14(4):419–427, 2014.
16. J. Camaño, R. Rodríguez, and P. Venegas. Convergence of a lowest-order finite element method for the transmission eigenvalue problem. *Calcolo*, 55, Art. 33(3):1–14, 2018.
17. A. Cangiani, E. H. Georgoulis, T. Pryer, and O. J. Sutton. A posteriori error estimates for the virtual element method. *Numer. Math.*, 137(4):857–893, 2017.
18. O. Certik, F. Gardini, G. Manzini, and G. Vacca. The virtual element method for eigenvalue problems with potential terms on polytopic meshes. *Appl. Math.*, 63(3):333–365, 2018.
19. O. Certik, F. Gardini, L. Mascotto, G. Manzini, and G. Vacca. The p- and hp-versions of the virtual element method for elliptic eigenvalue problems. *Comput. Math. Appl.*, 79(7):2035–2056, 2020.
20. H. Chen, H. Guo, Z. Zhang, and Q. Zou. A C^0 linear finite element method for two fourth-order eigenvalue problems. *IMA J. Numer. Anal.*, 37(4):2120–2138, 2017.
21. P. G. Ciarlet. *The Finite Element Method for Elliptic Problems*. SIAM, 2002.
22. D. Colton and R. Kress. *Inverse Acoustic and Electromagnetic Scattering Theory*. Springer, New York, 2013.
23. D. Colton, P. Monk, and J. Sun. Analytical and computational methods for transmission eigenvalues. *Inverse Problems*, 26(4):045011, 16, 2010.
24. F. Gardini, G. Manzini, and G. Vacca. The nonconforming virtual element method for eigenvalue problems. *ESAIM Math. Model. Numer. Anal.*, 53(3):749–774, 2019.
25. F. Gardini and G. Vacca. Virtual element method for second-order elliptic eigenvalue problems. *IMA J. Numer. Anal.*, 38(4):2026–2054, 2018.
26. H. Geng, X. Ji, J. Sun, and L. Xu. $C^0\text{IP}$ methods for the transmission eigenvalue problem. *J. Sci. Comput.*, 68(1):326–338, 2016.
27. P. Grisvard. *Elliptic Problems in Non-Smooth Domains*. Pitman, Boston, 1985.
28. J. Han, Y. Yang, and H. Bi. A new multigrid finite element method for the transmission eigenvalue problems. *Appl. Math. Comput.*, 292:96–106, 2017.
29. F. Lepe, D. Mora, G. Rivera, and I. Velásquez. A virtual element method for the Steklov eigenvalue problem allowing small edges. *J. Sci. Comput.*, 88(2):Article number: 44, 2021.
30. F. Lepe and G. Rivera. A virtual element approximation for the pseudostress formulation of the Stokes eigenvalue problem. *Comput. Methods Appl. Mech. Engrg.*, 379, Num:113753, 2021.
31. J. Meng and L. Mei. A mixed virtual element method for the vibration problem of clamped Kirchhoff plate. *Adv. Comput. Math.*, 46, Art. 68(5):1–18, 2020.
32. J. Meng, G. Wang, and L. Mei. A lowest-order virtual element method for the Helmholtz transmission eigenvalue problem. *Calcolo*, 58, Art. 2(1):1–22, 2021.
33. D. Mora and G. Rivera. A priori and a posteriori error estimates for a virtual element spectral analysis for the elasticity equations. *IMA J. Numer. Anal.*, 40(1):322–357, 2020.

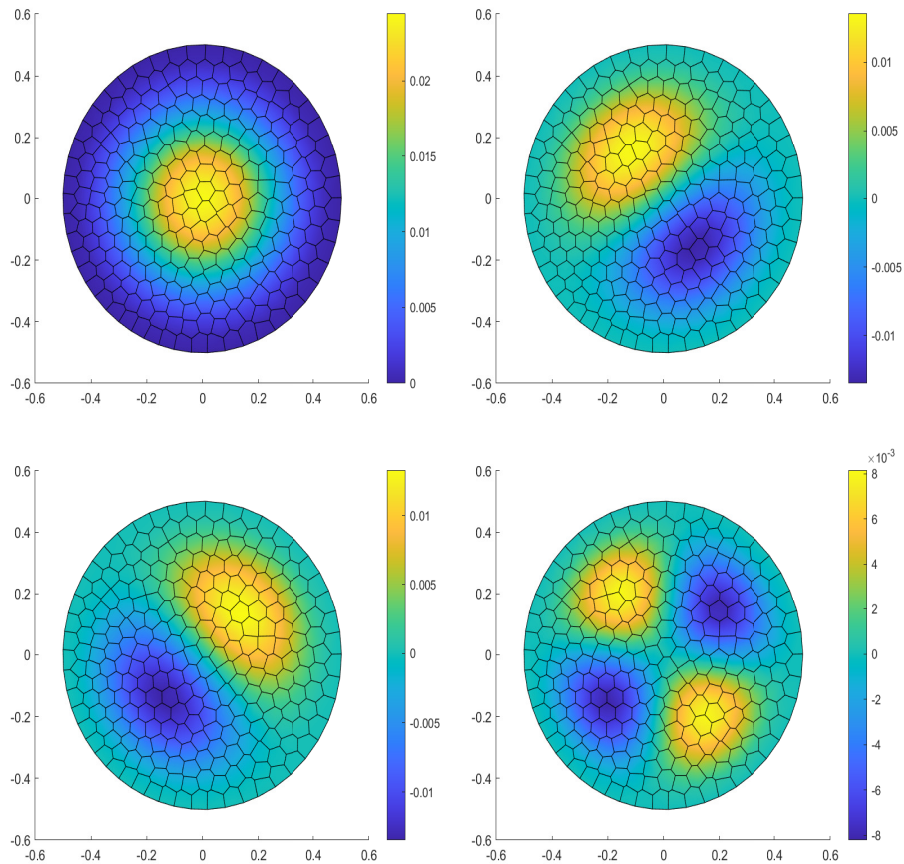


Fig. 6.4 Test 3. Eigenfunctions: u_{1h} (top left), u_{2h} (top right), u_{3h} (bottom left) and u_{4h} (bottom right) obtained with meshes Ω_h^n and $n = 8 + x - y$.

34. D. Mora, G. Rivera, and R. Rodríguez. A virtual element method for the Steklov eigenvalue problem. *Math. Models Methods Appl. Sci.*, 25(8):1421–1445, 2015.
35. D. Mora, G. Rivera, and I. Velásquez. A virtual element method for the vibration problem of Kirchhoff plates. *ESAIM Math. Model. Numer. Anal.*, 52(4):1437–1456, 2018.
36. D. Mora and I. Velásquez. A virtual element method for the transmission eigenvalue problem. *Math. Models Methods Appl. Sci.*, 28(14):2803–2831, 2018.
37. D. Mora and I. Velásquez. Virtual element for the buckling problem of Kirchhoff–Love plates. *Comput. Methods Appl. Mech. Engrg.*, 360:112687, 2020.
38. D. Mora and I. Velásquez. Virtual elements for the transmission eigenvalue problem on polytopal meshes. *SIAM J. Sci. Comput.*, 43(4):A2425–A2447, 2021.
39. J. E. Osborn. Spectral approximation for compact operators. *Math. Comput.*, 29:712–725, 1975.
40. G. Savaré. Regularity results for elliptic equations in Lipschitz domains. *J. Funct. Anal.*, 152(1):176–201, 1998.
41. J. Sun. Iterative methods for transmission eigenvalues. *SIAM J. Numer. Anal.*, 49(5):1860–1874, 2011.
42. J. Sun and A. Zhou. *Finite Element Methods for Eigenvalue Problems*. Chapman and Hall/CRC, 2016.
43. C. Talischi, G. H. Paulino, A. Pereira, and I. F. Menezes. Polymesh: a general-purpose mesh generator for polygonal elements written in matlab. *Struct. Multidiscip. Optim.*, 45(3):309–328, 2012.
44. Y. Yang, H. Bi, H. Li, and J. Han. Mixed methods for the Helmholtz transmission eigenvalues. *SIAM J. Sci. Comput.*, 38(3):A1383–A1403, 2016.
45. Y. Yang, H. Bi, H. Li, and J. Han. A C^0 IPG method and its error estimates for the Helmholtz transmission eigenvalue problem. *J. Comput. Appl. Math.*, 326:71–86, 2017.
46. Y. Yang, J. Han, and H. Bi. Error estimates and a two grid scheme for approximating transmission eigenvalues. *arXiv preprint arXiv:1506.06486 V2 [math. NA]*, 2016.
47. Y. Yang, J. Han, and H. Bi. Non-conforming finite element methods for transmission eigenvalue problem. *Comput. Methods Appl. Mech. Engrg.*, 307:144–163, 2016.